



## PRODUCT/SERVICE BULLETIN

**ISSUE DATE:** September 13, 2006

**TO:** Newmar Industries and Newmar Dealers

**FROM:** HWH Corporation

**RE:** 2007 Essex and Mountain Aire built JAN 06 thru JUL 06

### RELAY ROTATION WITH INSTALLATION OF ADAPTOR PLATE KIT - RAP91917.

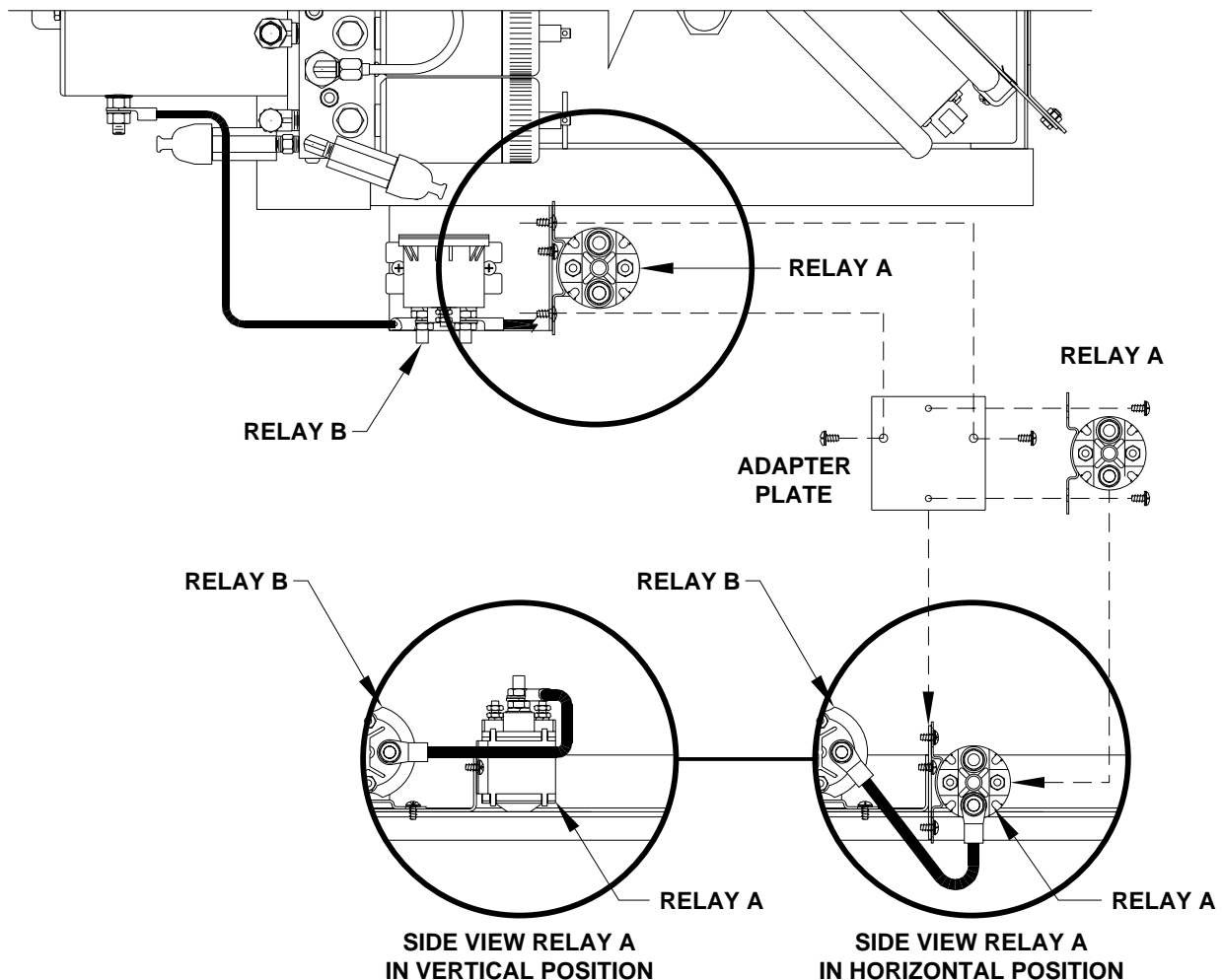
(KIT INCLUDES A NEW RAP7505 RELAY)

On units built within the above time frame, relay A is mounted in a vertical position. In order to avoid moisture accumulation at the base of relay A use the adapter plate provided to rotate the relay 90 deg.

If relay A is mounted in the horizontal position, no modification is necessary.

(Replacement relay may have a different physical appearance)

#### TOP VIEW OF POWER UNIT WITH RELAY A IN THE VERTICAL POSITION



**IMPORTANT:** Over tightening the terminal nuts will cause damage to the relay. The manufactures torque specifications are 60 inch lbs. max. for the contact terminals (large posts) and 12-18 inch lbs. for the coil terminals (small posts). (A back-up wrench must be used to hold the bottom nut stationary.) All terminals of both relays should be coated to prevent corrosion. The use of Red Air Dry Enamel, number B6-665 by P.D. George Company is recommended.